

# ABC HEAT

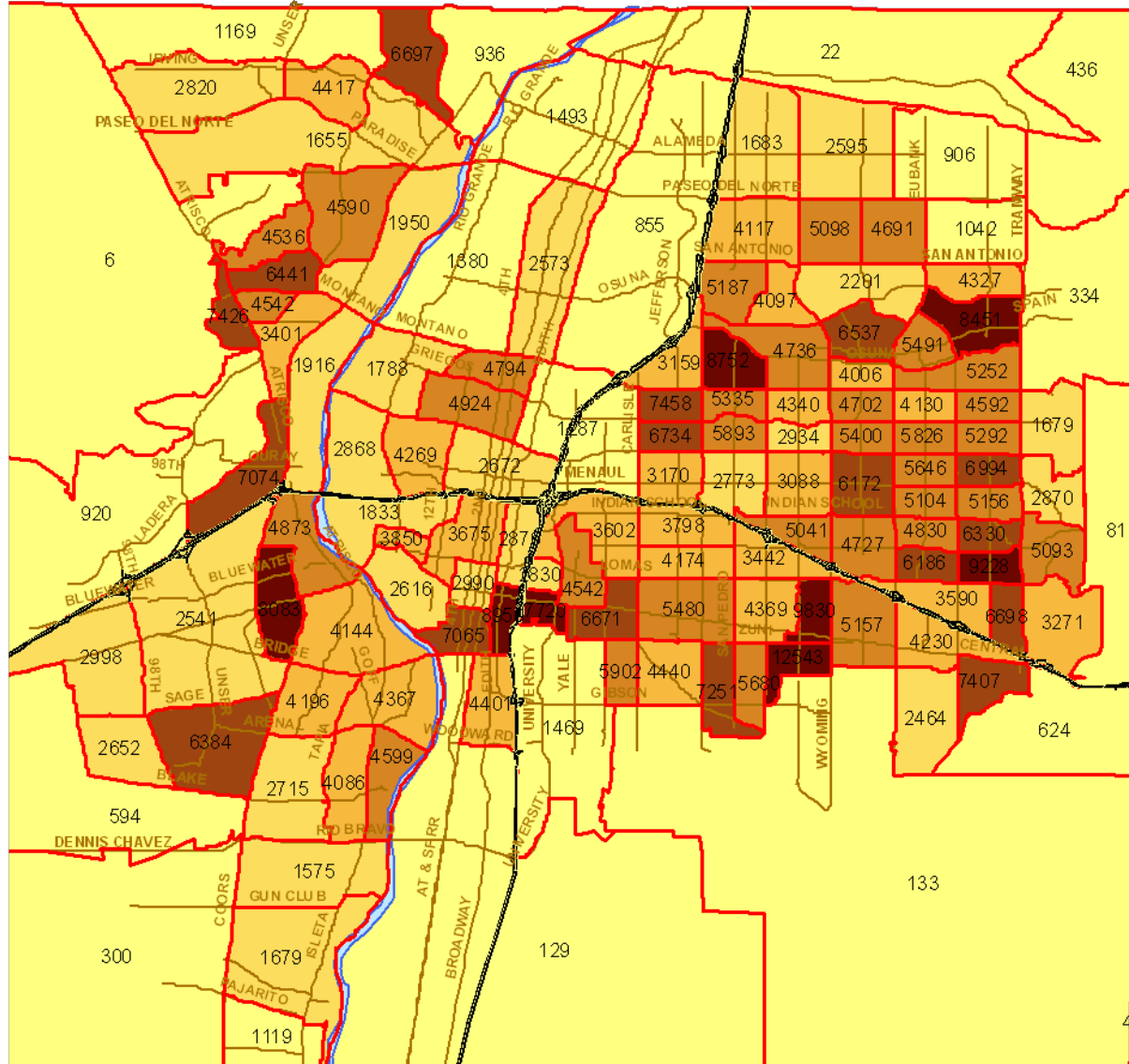
Albuquerque - Bernalillo County Health Equity Assessment Tool

## POPULATION DENSITY BERNALILLO COUNTY COMMUNITIES

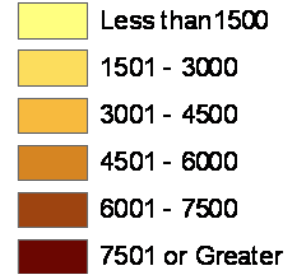
T. SCHARMEN



# POPULATION DENSITY OF BERNALILLO COUNTY CENSUS TRACTS, 2007



**Persons per Square Mile  
Bernalillo County Census Tracts, 2007**



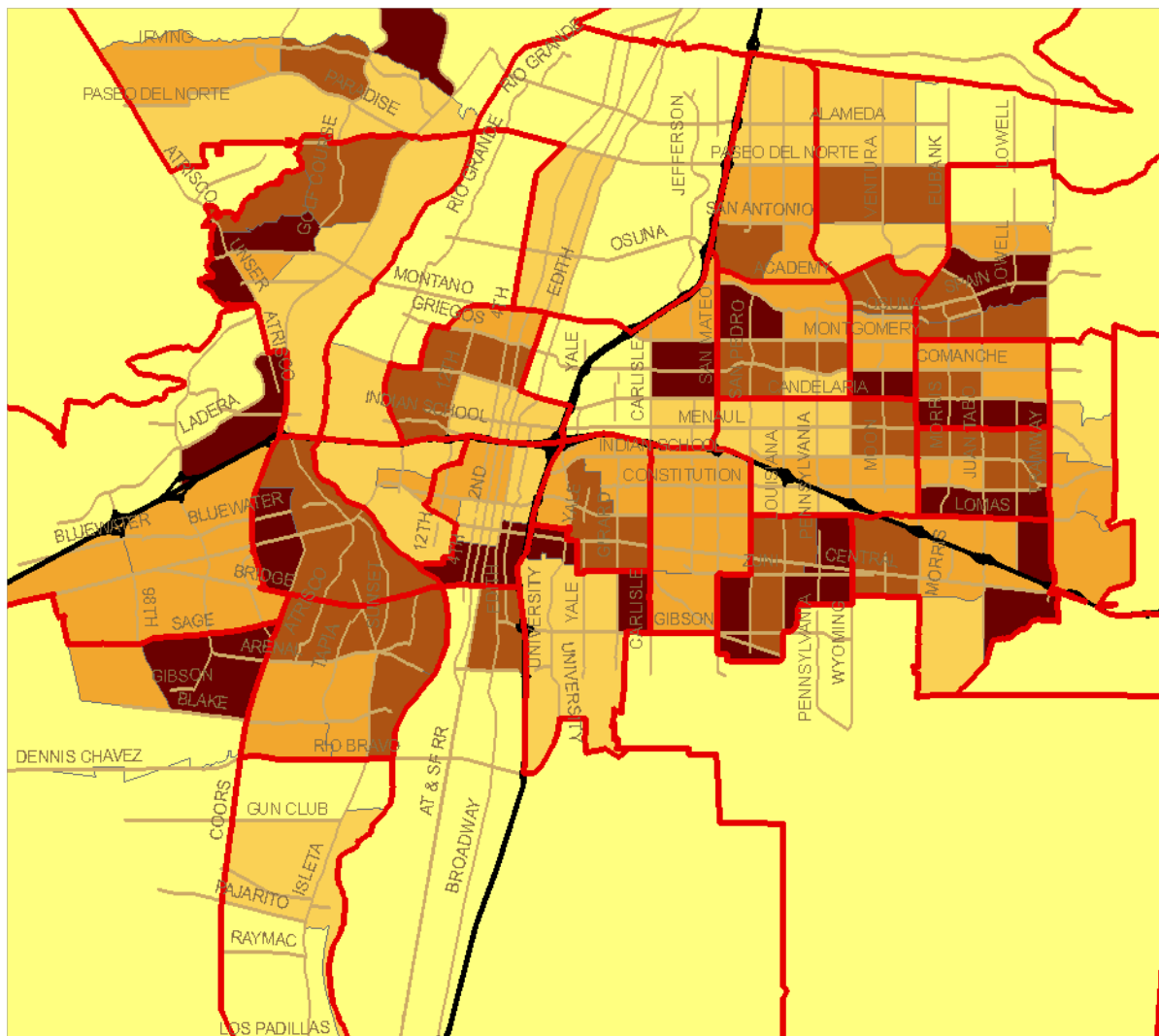
*Data Source: GeoLytics, 2007*

*Spatial Analysis: T Scharmen, NMDOH*

PLACE MATTERS – ABC HEAT

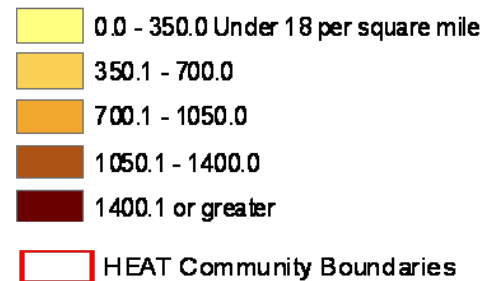
Source: GeoLytics

# WHERE DO THE CHILDREN LIVE?



## CHILDREN UNDER 18, 2007

Number per Square Mile  
Bernalillo County Census Tracts



In 2007, Albuquerque – Bernalillo County was home to approximately:

**145,000** Children under 18

**129,000** Children under 15

**132,000** Youth and young adults age 15 through 29

THESE MAPS ARE PUBLIC DOMAIN.

FOR INQUIRIES, COMMENTS, UPDATES, AND CORRECTIONS, PLEASE CONTACT:

Thomas N. Scharmen, M.A., M.P.H., Epidemiologist  
Regions 1 & 3, Office of Community Assessment, Planning and Evaluation  
Public Health Division, New Mexico Department of Health  
North Valley Public Health Office  
7704-A 2nd St, NW Albuquerque, NM 87107  
Telephone: 897-5700 ext 126; Fax: 897-1010  
E-mail: [thomas.scharmen@state.nm.us](mailto:thomas.scharmen@state.nm.us)

JULY 2010