

ABC HEAT

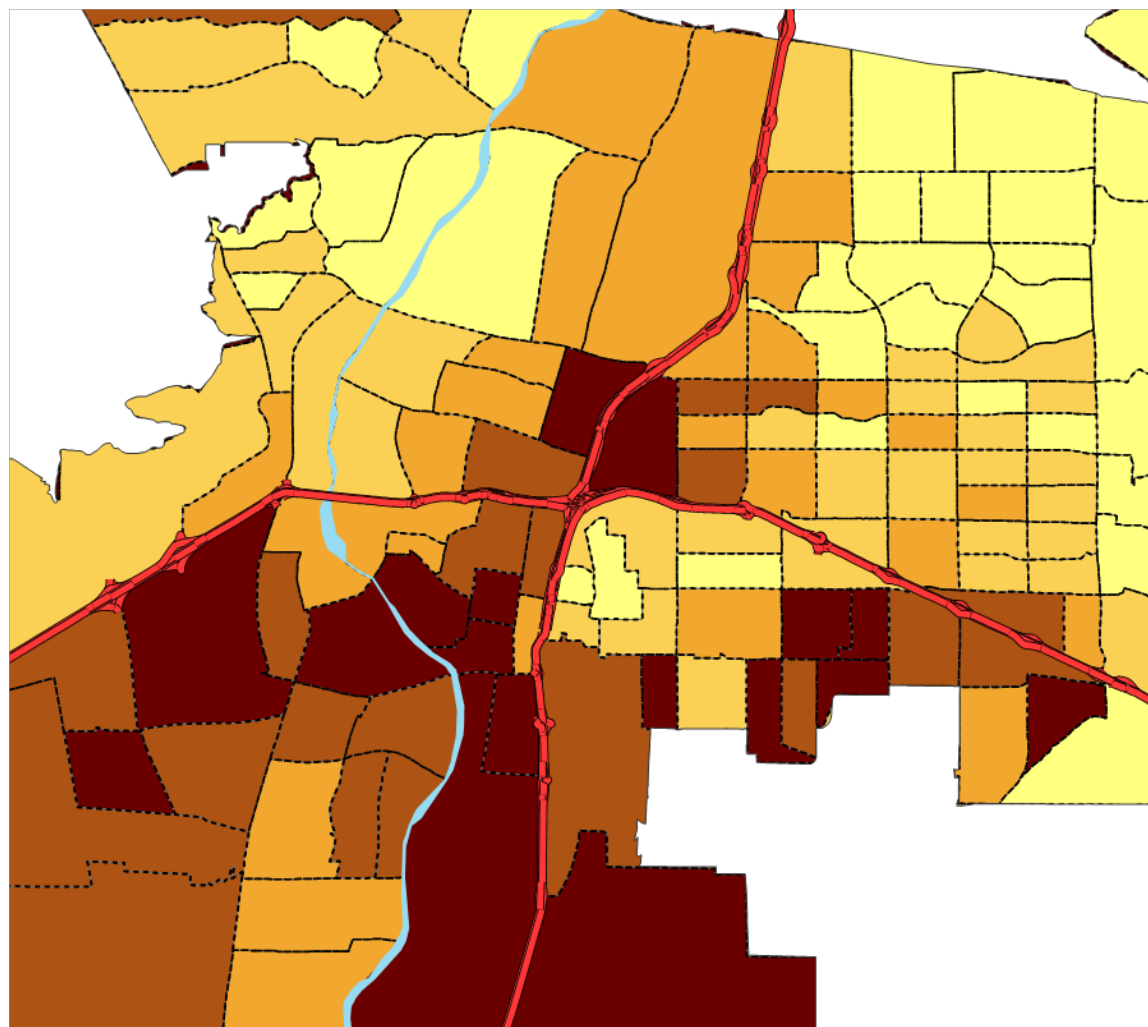
BIRTH INDICATORS ALBUQUERQUE AND BERNALILLO COUNTY

2001-2005

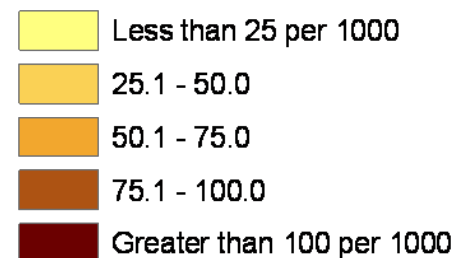
T. SCHARMEN



Teen Birth Rates, Albuquerque Census Tracts, 2001 - 2005



**Teen (15-19) Birth Rates
Bernalillo County, 2001 - 2005**

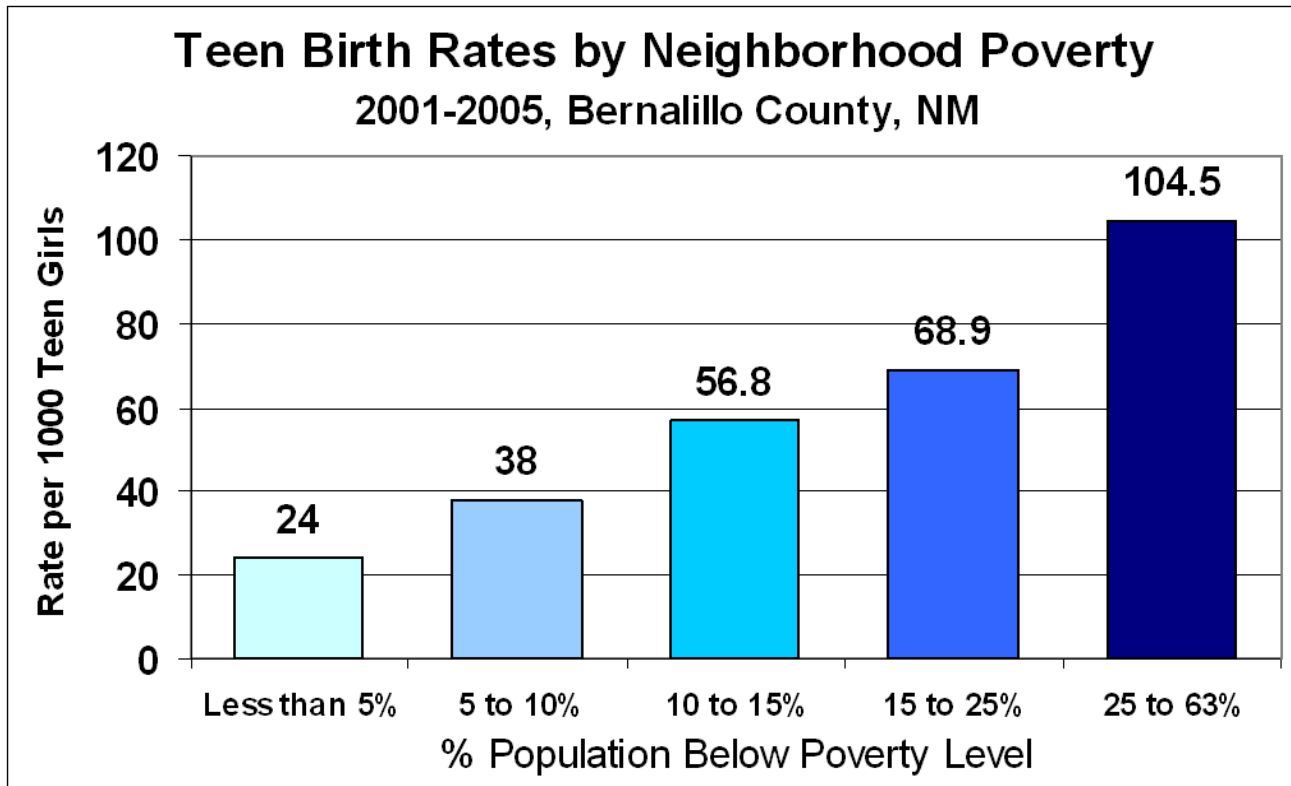


Teen Birth Rates, 2003

U.S.A.	41.6
N.M.	62.6
Bernalillo County	59.8

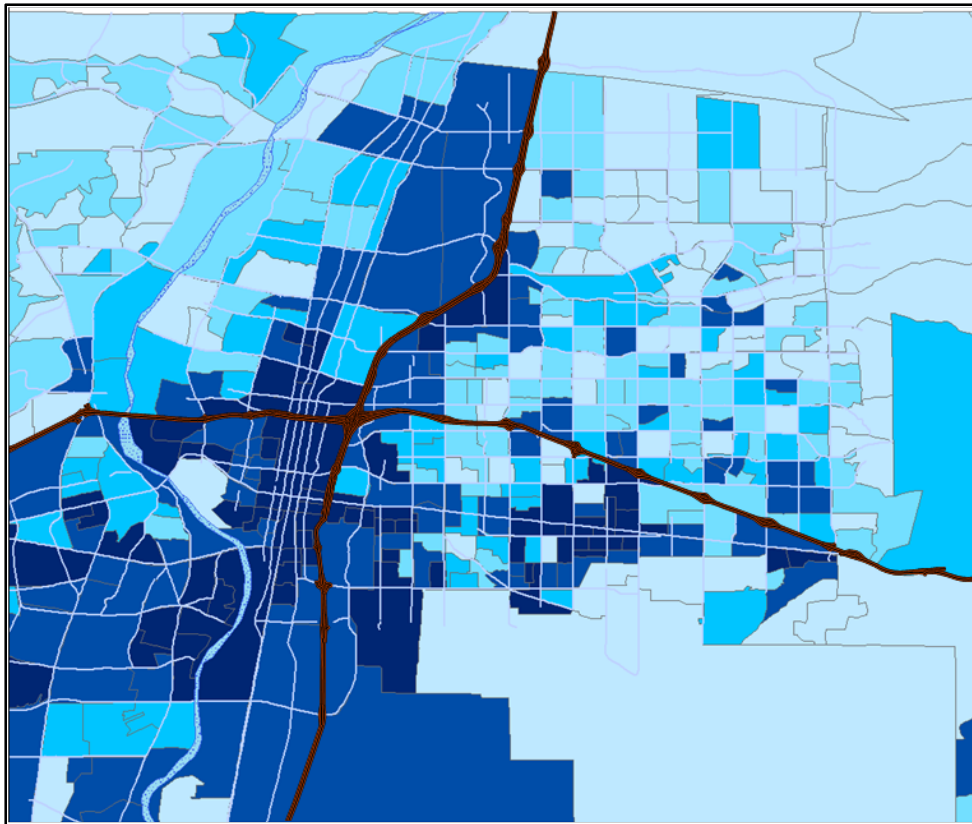
Source: NMDOH, BVRHS

Source: NMDOH, BVRHS; Analysis: T Scharmen, NMDOH, Region 3, Office of Community Assessment



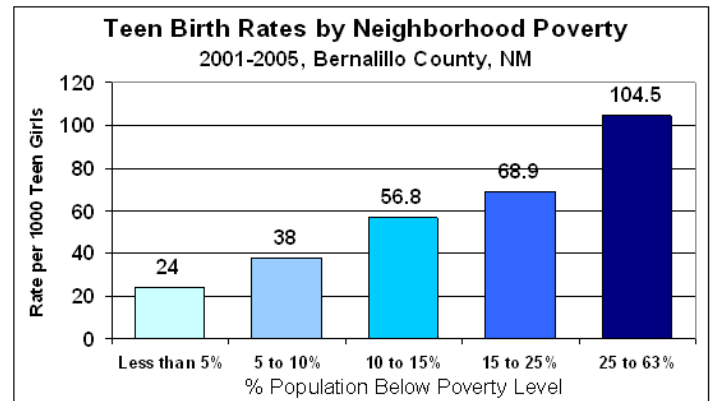
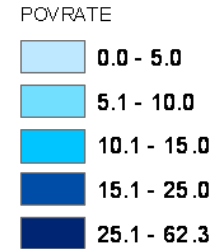
Source: NMDOH, BVRHS; Analysis: T Scharmen, NMDOH, Region 3, Office of Community Assessment

Persons Living in Poverty, Bernalillo County, NM



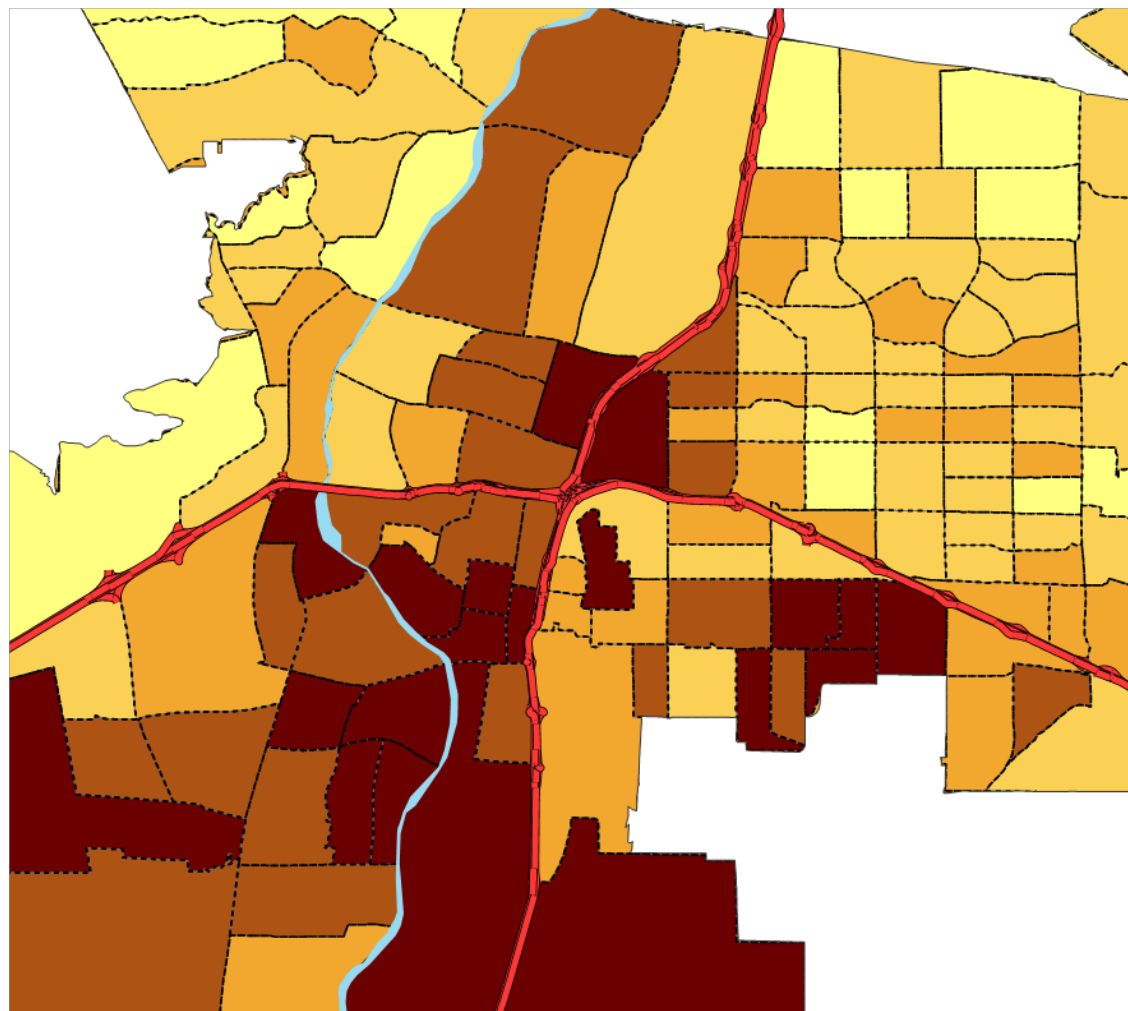
Source: US Census 2000; Analysis: WAtahas

Percent Population Under the Federal Poverty Level (Block Groups)

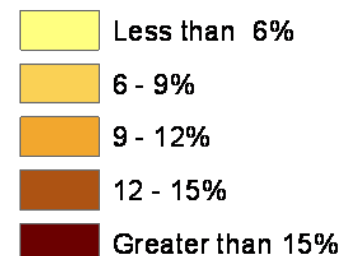


Source: NMDOH, BVRHS; Analysis: T Scharmen, NMDOH, Region 3, Office of Community Assessment

Low Prenatal Care, Albuquerque Census Tracts, 2001 - 2005



Percent of Mothers Receiving Low or No Prenatal Care



Level of Prenatal Care is estimated by a Modified Kessner Index, based on the number of prenatal care visits and the month prenatal care began

Low or No Prenatal Care, 2003

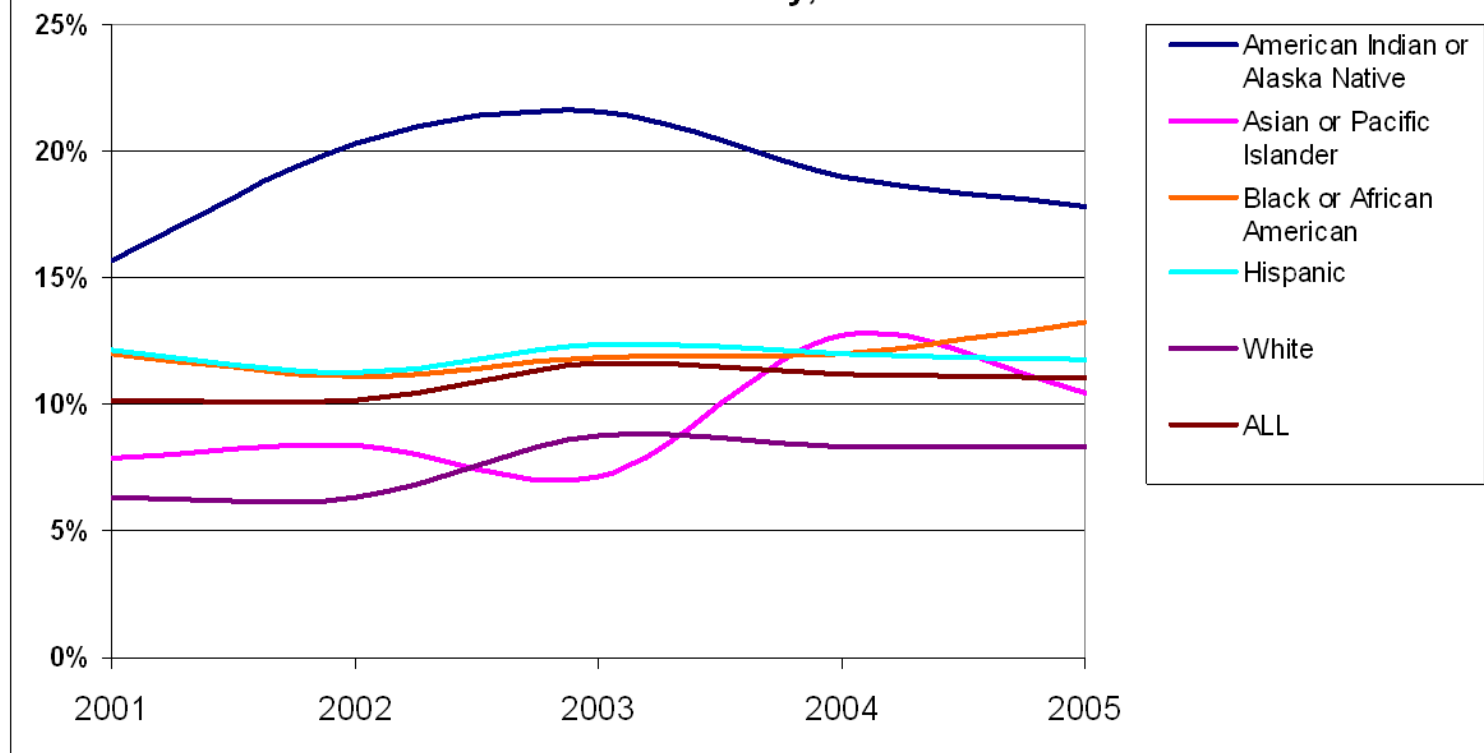
N.M.	12.5
Bernalillo County	10.8

Source: NMDOH, BVRHS

Source: NMDOH, BVRHS; Analysis: T Scharmen, NMDOH, Region 3, Office of Community Assessment

Mothers of all ages

Percent Mothers with Low or No Prenatal Care Bernalillo County, 2001-2005



Source: NMDOH, BVRHS; Analysis: T Scharmen, NMDOH, Region 3, Office of Community Assessment

Level of Prenatal Care is estimated by a Modified Kessner Index, based on the number of prenatal care visits and the month prenatal care began

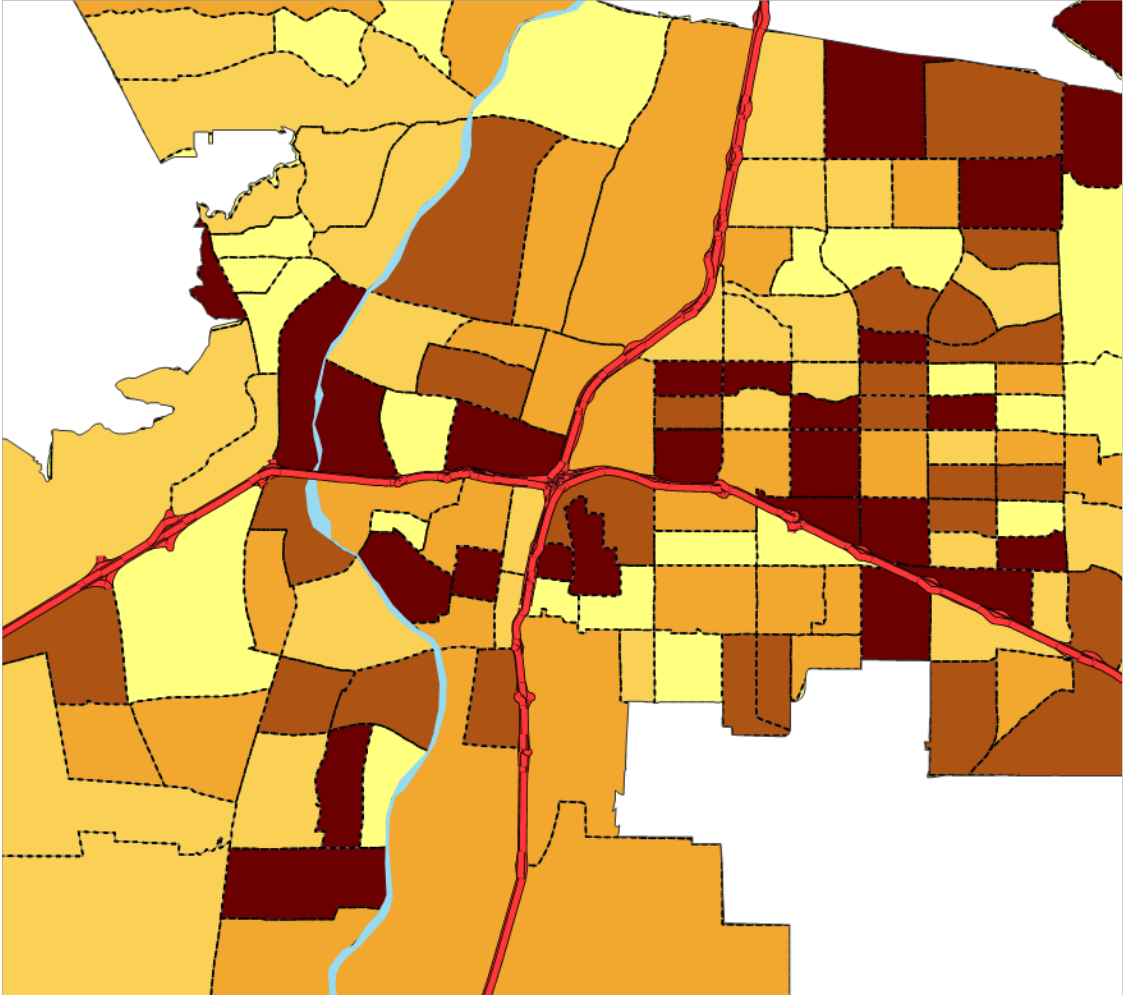
Mothers of all ages

Low or No Prenatal Care, 2003

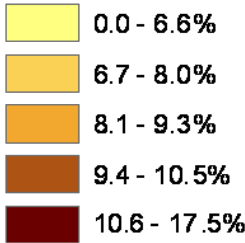
N.M.	12.5
Bernalillo County	10.8

Source: NMDOH, BVRHS

Low Birth Weight Births, Albuquerque Census Tracts, 2001 - 2005



Low Birth Weight Births Mothers of All Ages, 2001 - 2005



Percent low birth weight births equals the number of births of infants weighing less than 2500 grams (5.5 lbs) divided by the total number of births among the same population.

Low Birth Weight Births, 2003

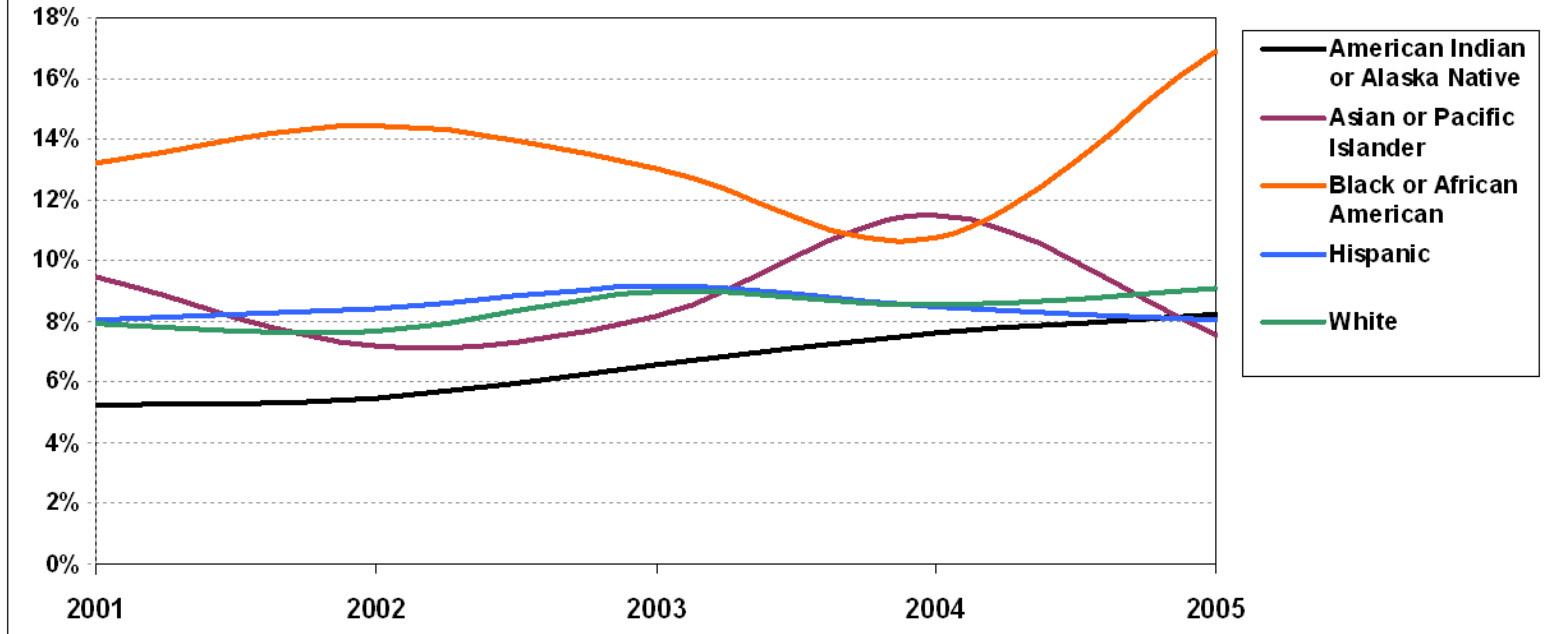
U.S.A.	7.8%
N.M.	8.1%
Bernalillo County	8.4%

Source: NMDOH, BVRHS

Source: NMDOH, BVRHS; Analysis: T Scharmen, NMDOH, Region 3, Office of Community Assessment

Low Birthweight Births by Race / Ethnicity, 2001 - 2005

Mothers of All Ages, Bernalillo County, NM



Source: NMDOH, BVRHS; Analysis: T Scharmen, NMDOH, Region 3, Office of Community Assessment

Percent low birth weight births equals the number of births of infants weighing less than 2500 grams (5.5 lbs) divided by the total number of births among the same population.

Low Birth Weight Births, 2003

U.S.A.	7.8%
N.M.	8.1%
Bernalillo County	8.4%

Source: NMDOH, BVRHS

THESE MAPS ARE PUBLIC DOMAIN.

FOR INQUIRIES, COMMENTS, UPDATES, AND CORRECTIONS, PLEASE CONTACT:

Thomas N. Scharmen, M.A., M.P.H., Epidemiologist
Regions 1 & 3, Office of Community Assessment, Planning and Evaluation
Public Health Division, New Mexico Department of Health
North Valley Public Health Office
7704-A 2nd St, NW Albuquerque, NM 87107
Telephone: 897-5700 ext 126; Fax: 897-1010
E-mail: thomas.scharmen@state.nm.us

JULY 2010